

The Virginia Commonwealth  
University  
Life Sciences Building

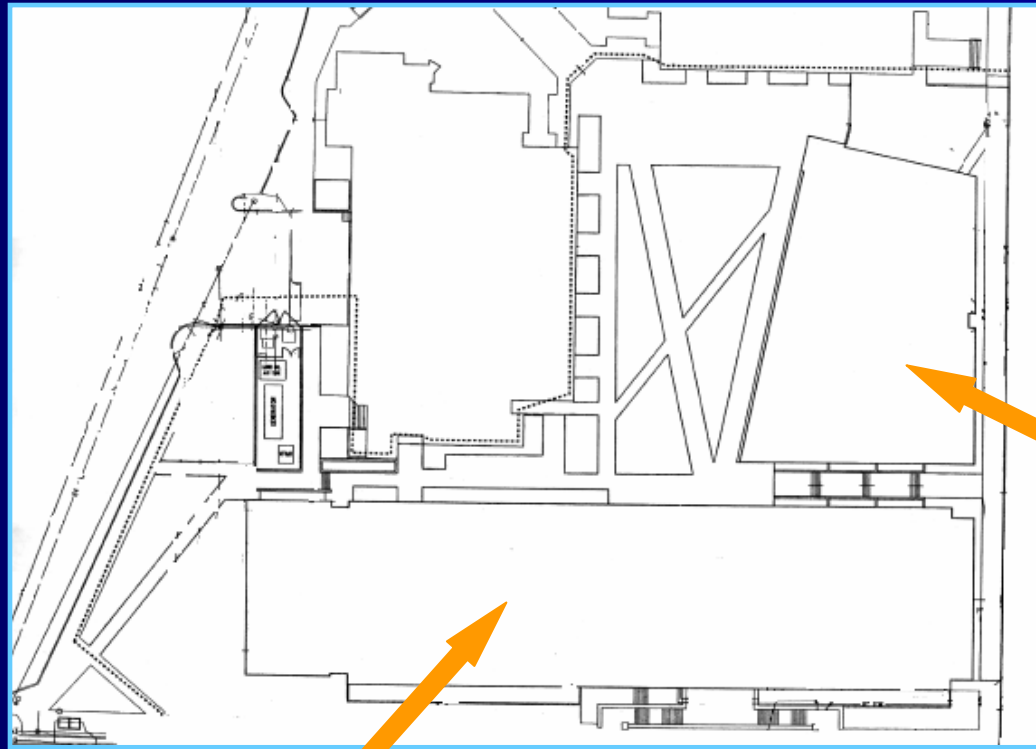
Lindsay Rekuc

# Building Overview

- Location: Richmond, VA
- Size: 132,500 s.f.
- Cost: \$22 million
- Completed: 2001
- Architect: Ayers Saint Gross



# Building Overview



Classroom  
Building

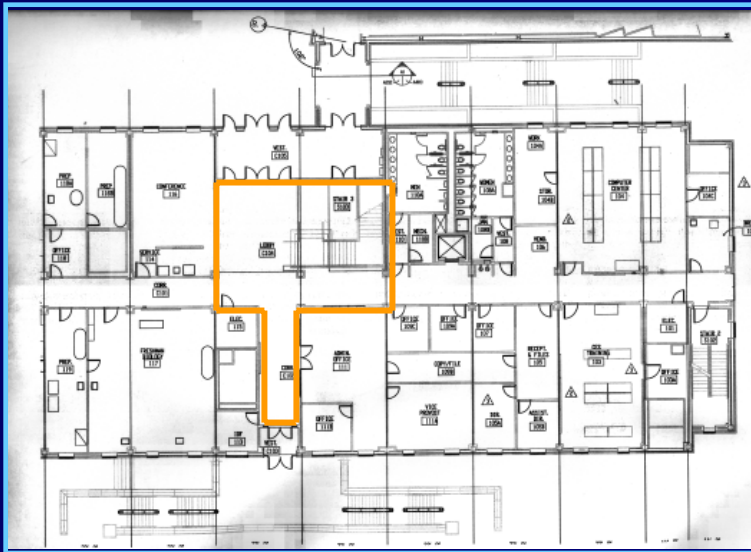
Laboratory Building

# Building Uses

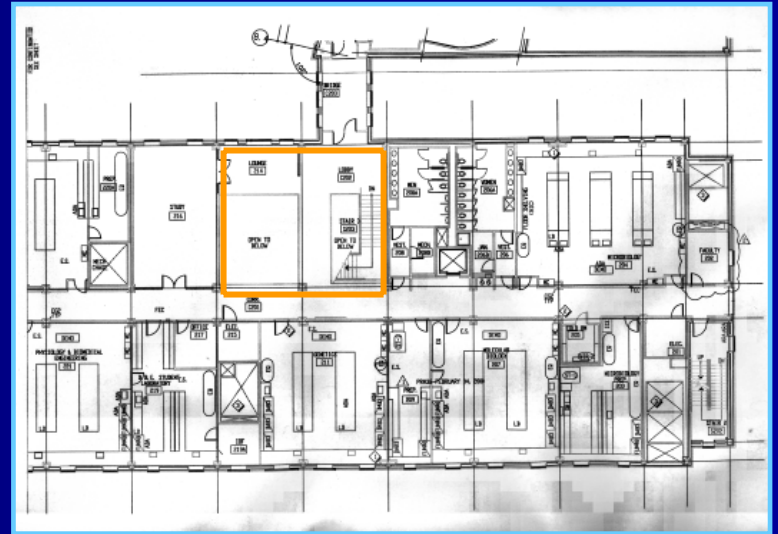
- Classrooms
- Laboratories
- Auditoriums
- Greenhouse
- Aquatics Facility



# Lobby- Location

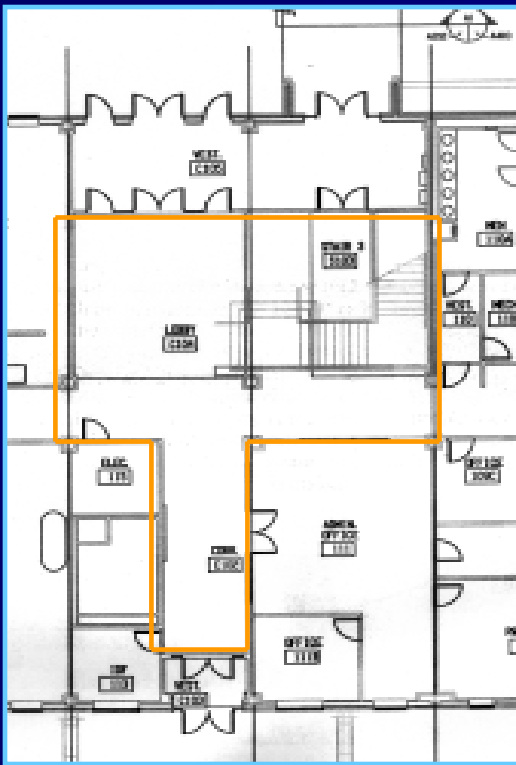


First Floor

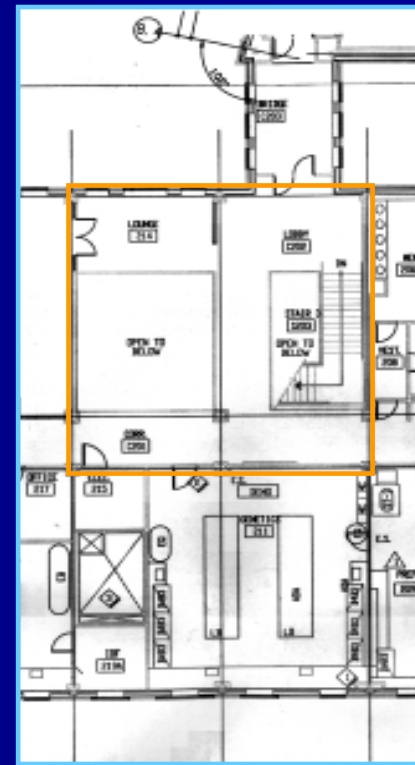


Second Floor

# Lobby- Plan



First Floor



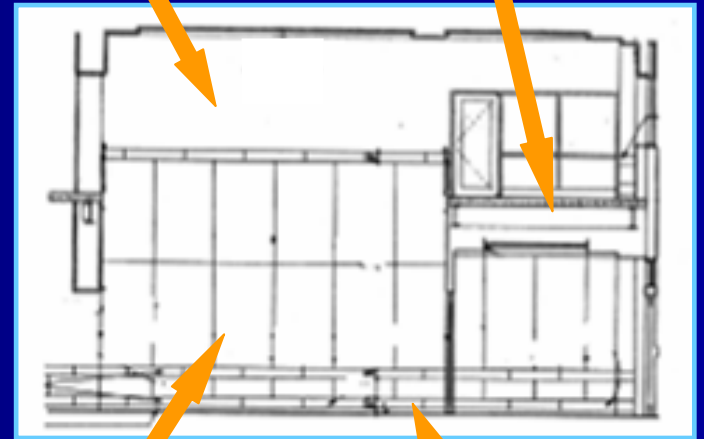
Second Floor

# Lobby- Elevations

Vinyl Composition  
Tile

Gypsum Wall Board

Vinyl Composition  
Tile



Wood Paneling

Slate

Slate

# Lobby- Elevations

Vinyl Composition Tile

Gypsum Wall Board



Wood Paneling

Slate

Gypsum Wall Board



# Lobby- Design Considerations

- Focal Points:
  - Building Exits
  - Stairway
  - Corridors
- Adjustment between outdoors and indoors

# Lobby- Schematic Design Goals

- Highlight Wood Paneling
- Provide guidance in direction
- Inviting atmosphere

# Lobby- Proposed Fixtures



Decorative Pendant

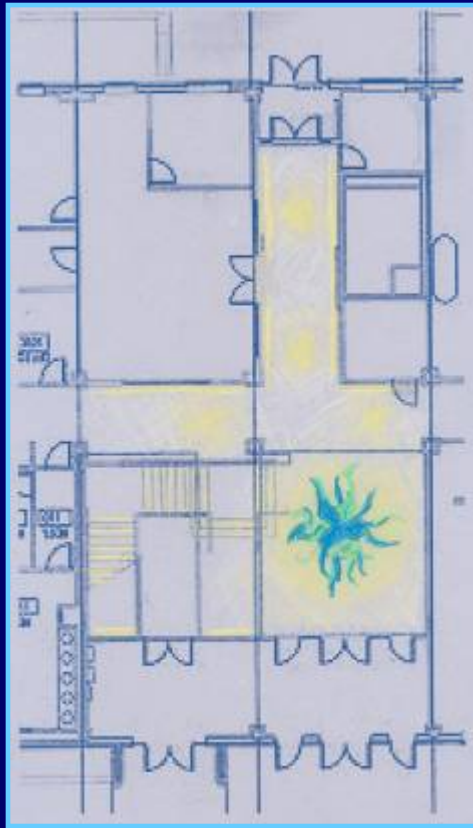


Wall Wash along Perimeter

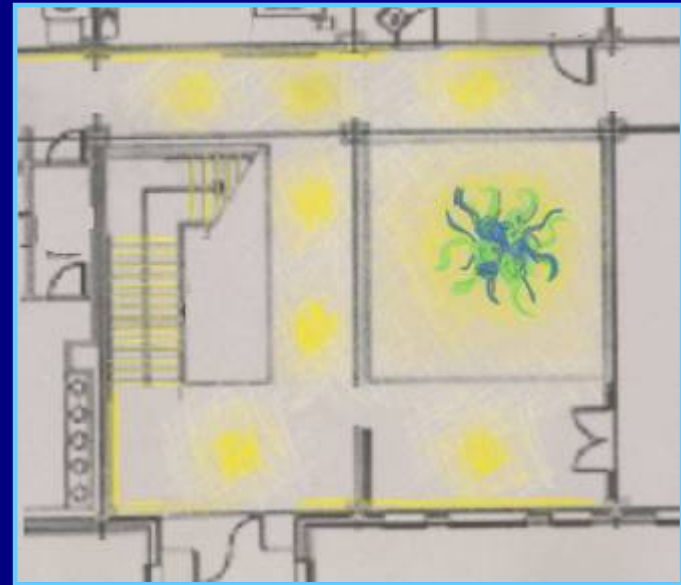


Step Light

# Lobby- Schematic Design Sketches

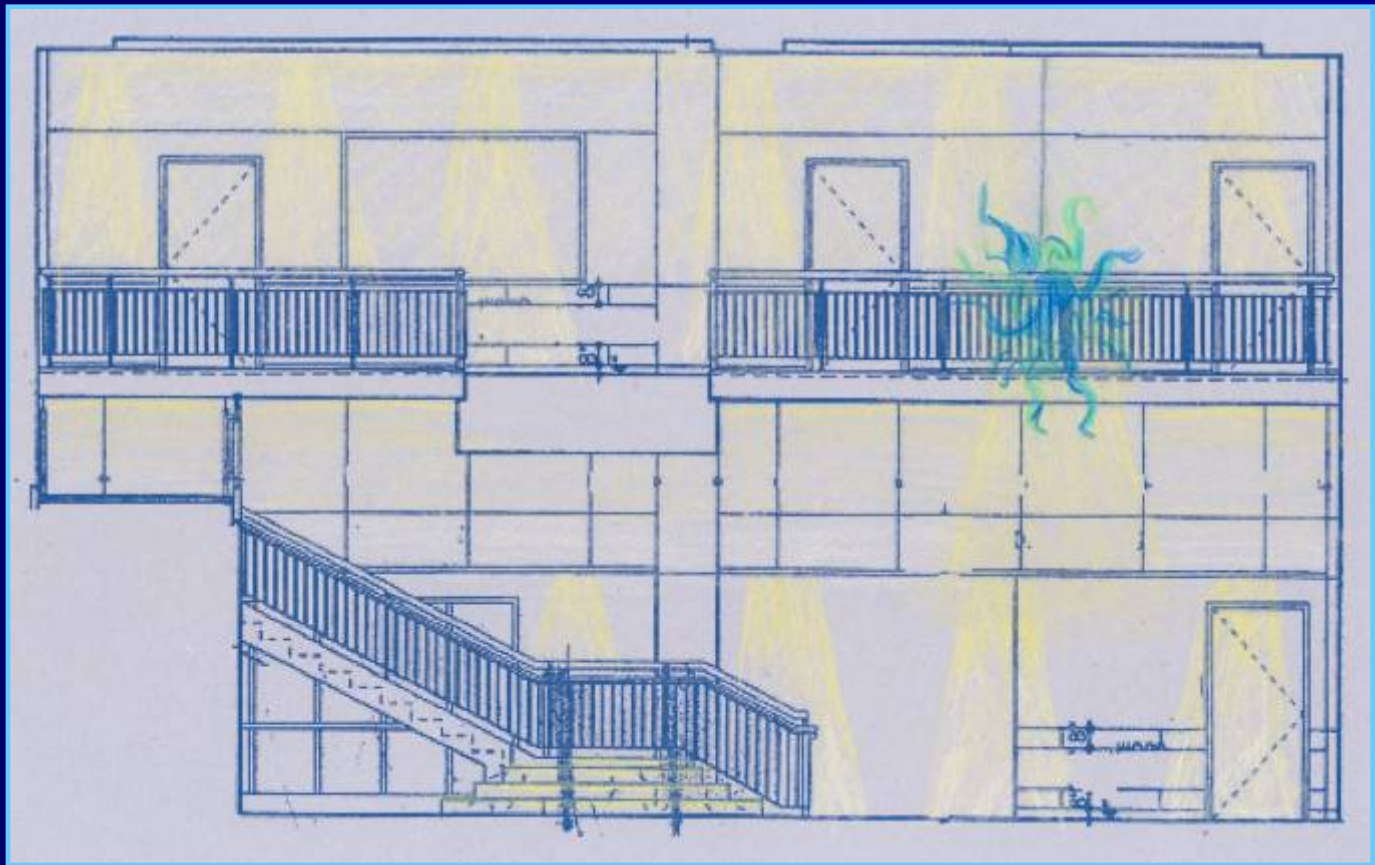


First Floor

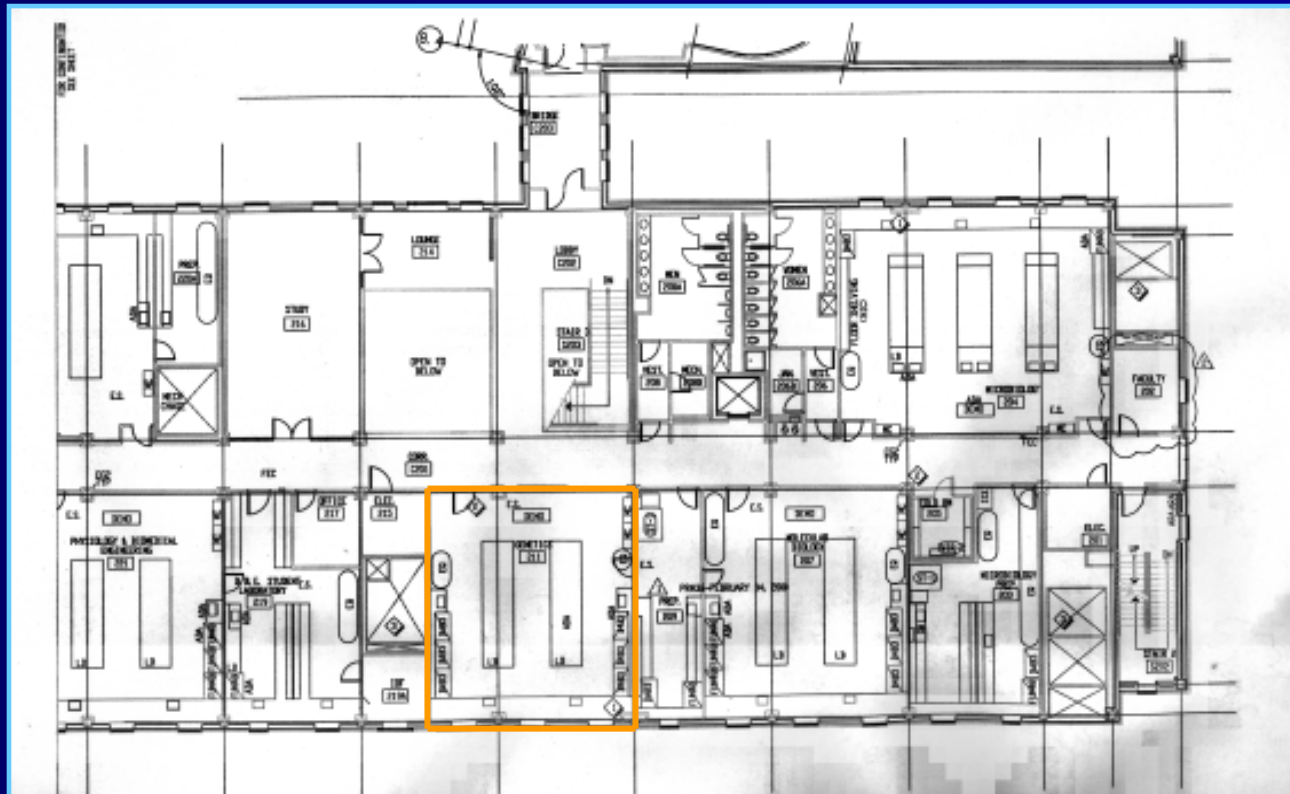


Second Floor

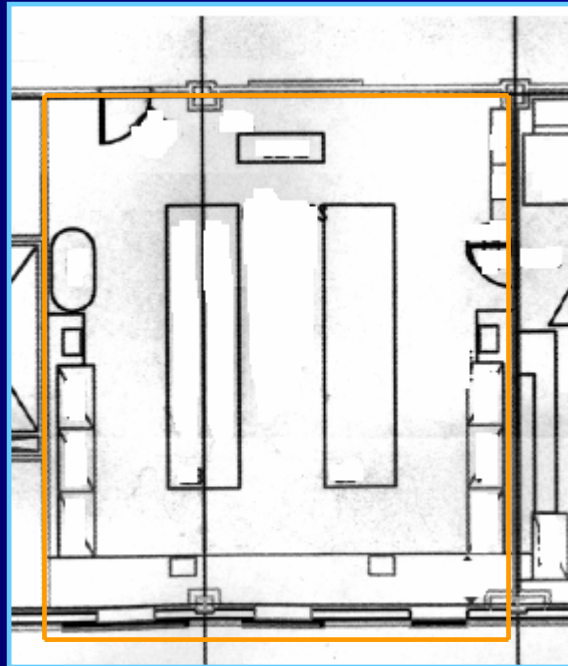
# Lobby- Schematic Design Sketches



# Genetics Laboratory- Location



# Genetics Laboratory- Plan



# Genetics Laboratory- Design Considerations

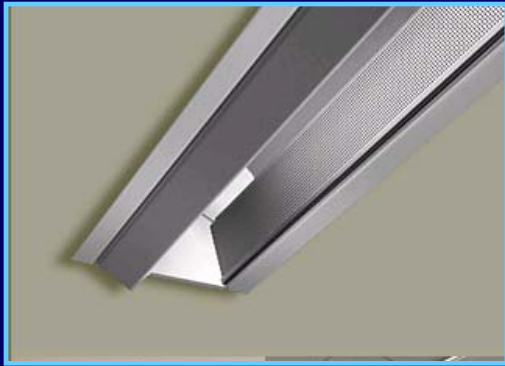
- Focal Points:
  - Speaker
  - Marker board
- Research being performed



# Genetics Laboratory- Schematic Design Goals

- Productive atmosphere
- Clean
- Limit Glare
- Good visibility

# Genetics Laboratory- Proposed Fixtures



Wall Wash at  
Front of Room

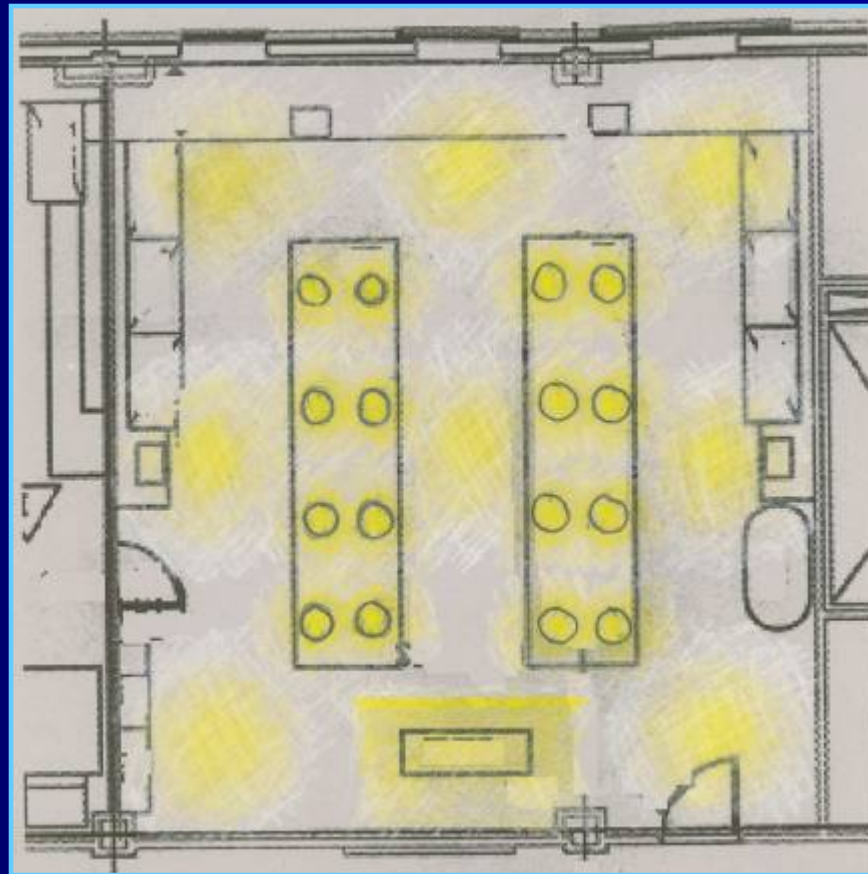


Adjustable Task Light  
over Lab Benches

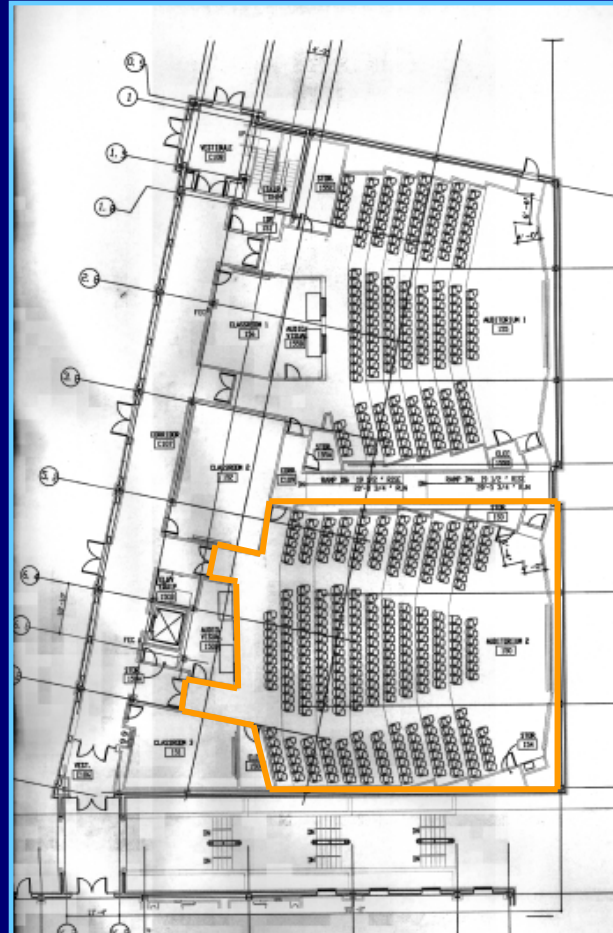


Downlight for  
General Lighting

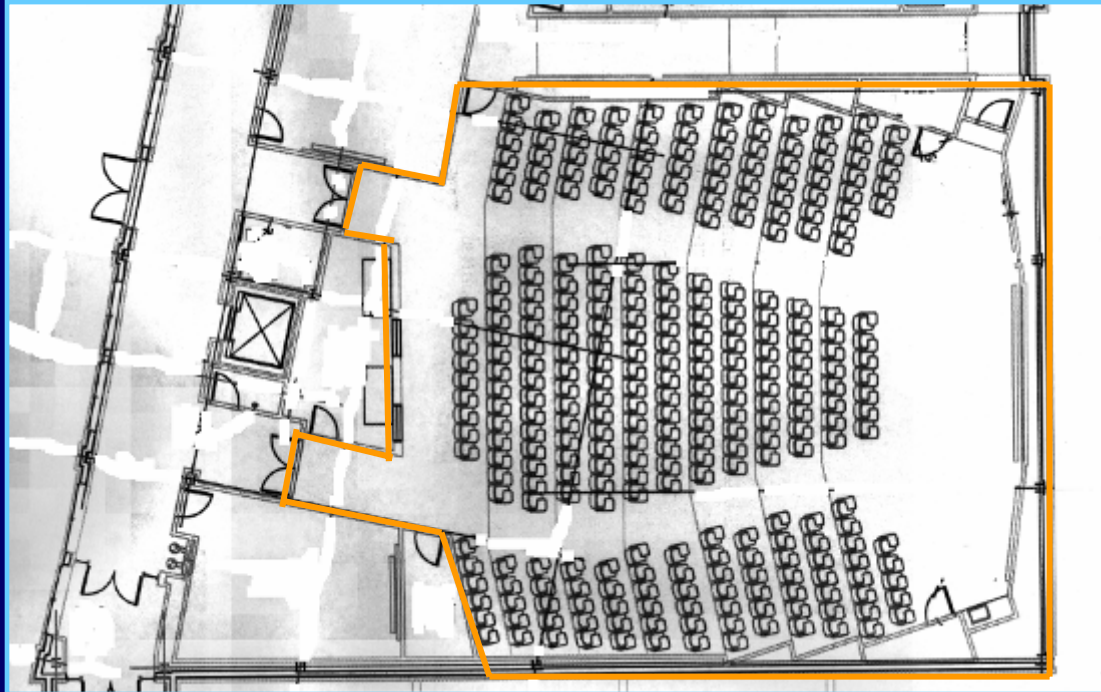
# Genetics Laboratory- Schematic Design Sketches



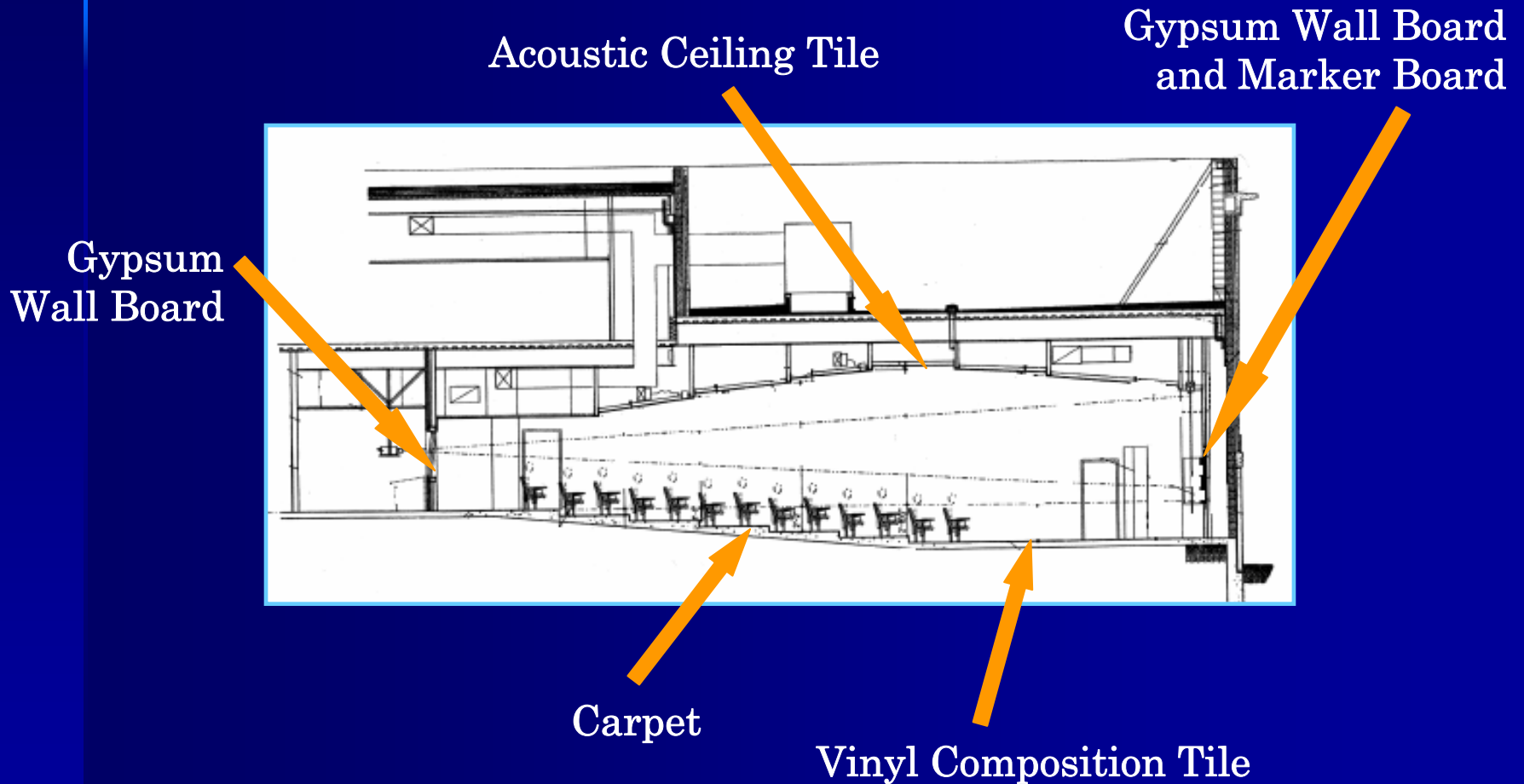
# Auditorium- Location



# Auditorium- Plan



# Auditorium- Section



# Auditorium- Design Considerations

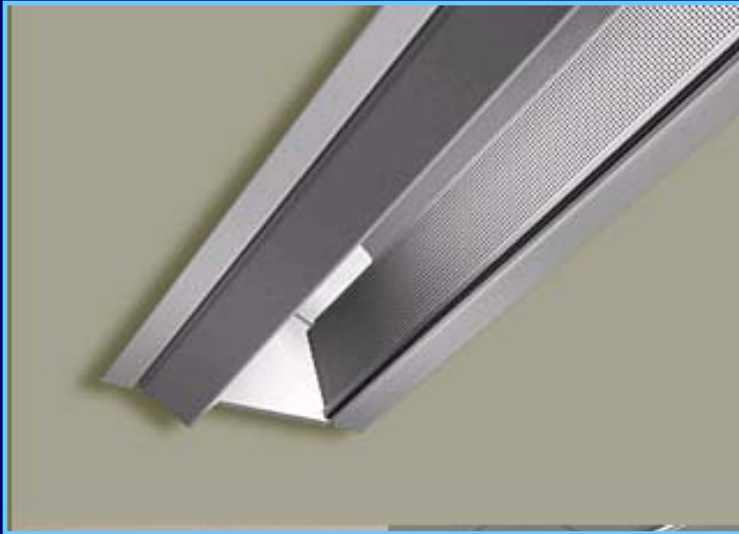
- Focal Points:
  - Speaker
  - Marker boards
  - Task dependent flexibility in light levels

# Auditorium- Schematic Design Goals

- Draw attention to front of room
- Flexible system
- Academic atmosphere



# Auditorium- Proposed Fixtures

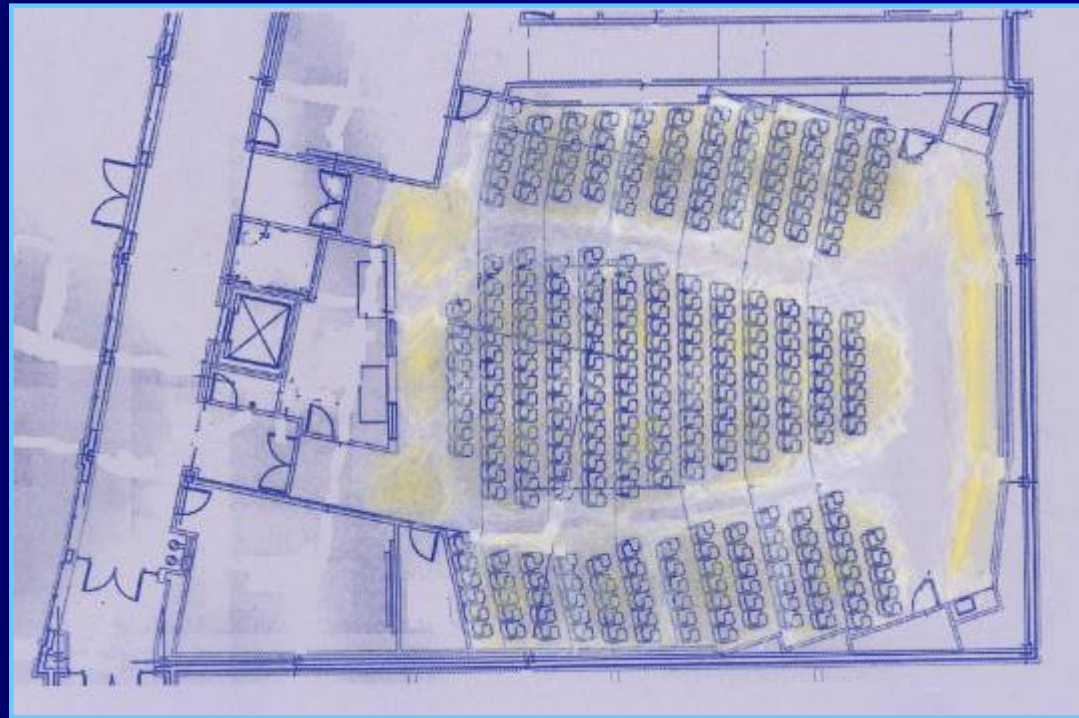


Wall Wash at Front of Room  
on Marker board and Speaker

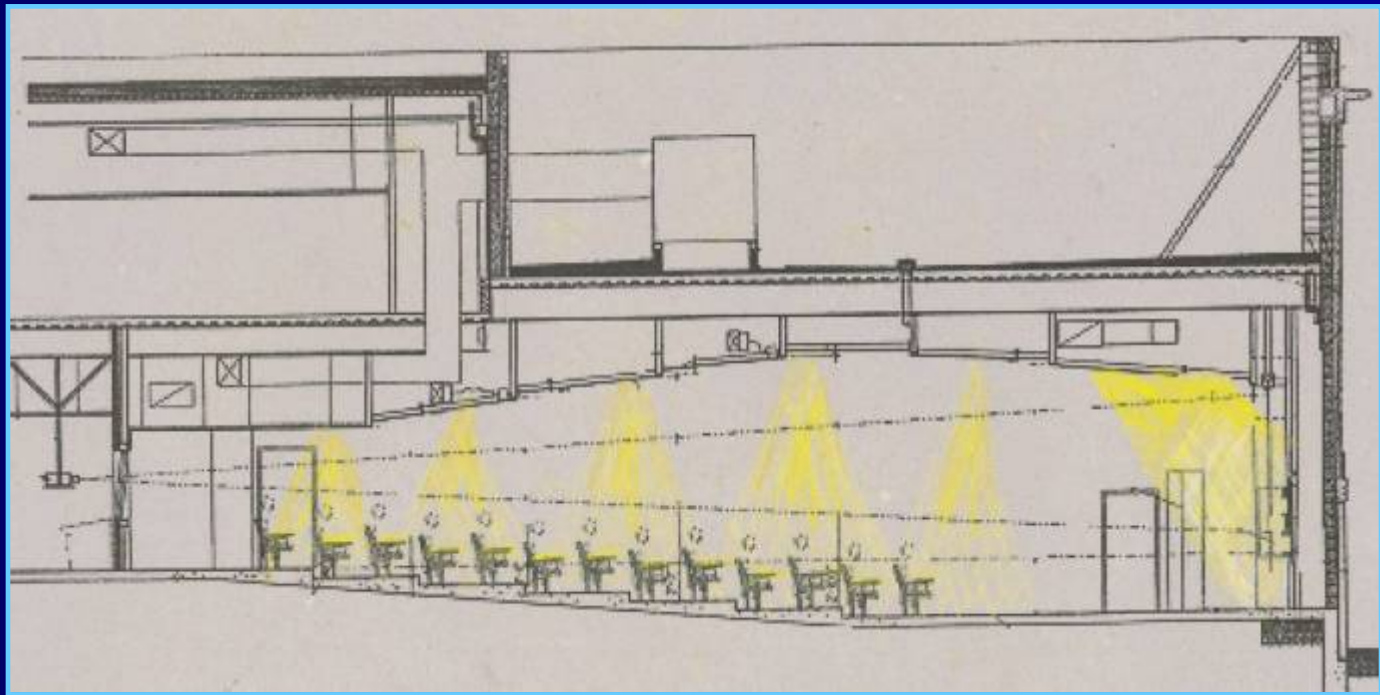
Dimmable Downlight for Task  
Lighting in Seating Area



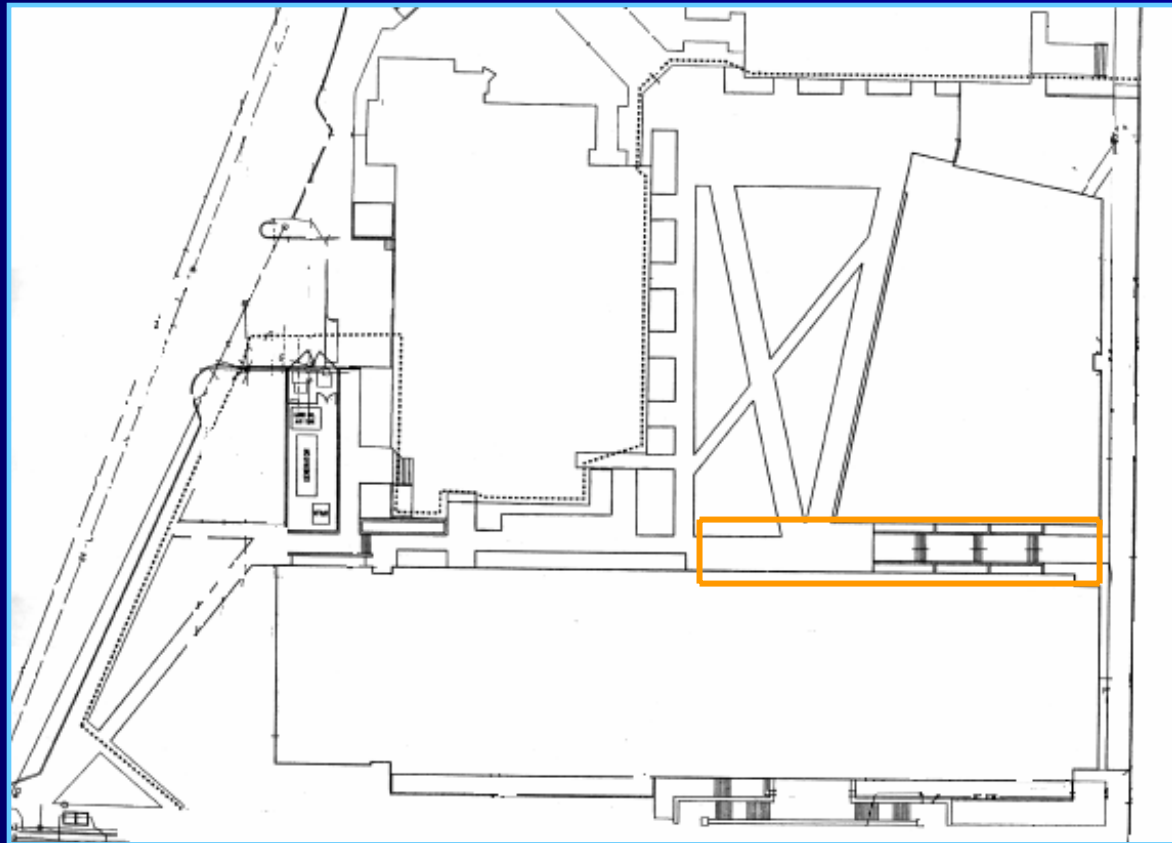
# Auditorium- Schematic Design Sketches



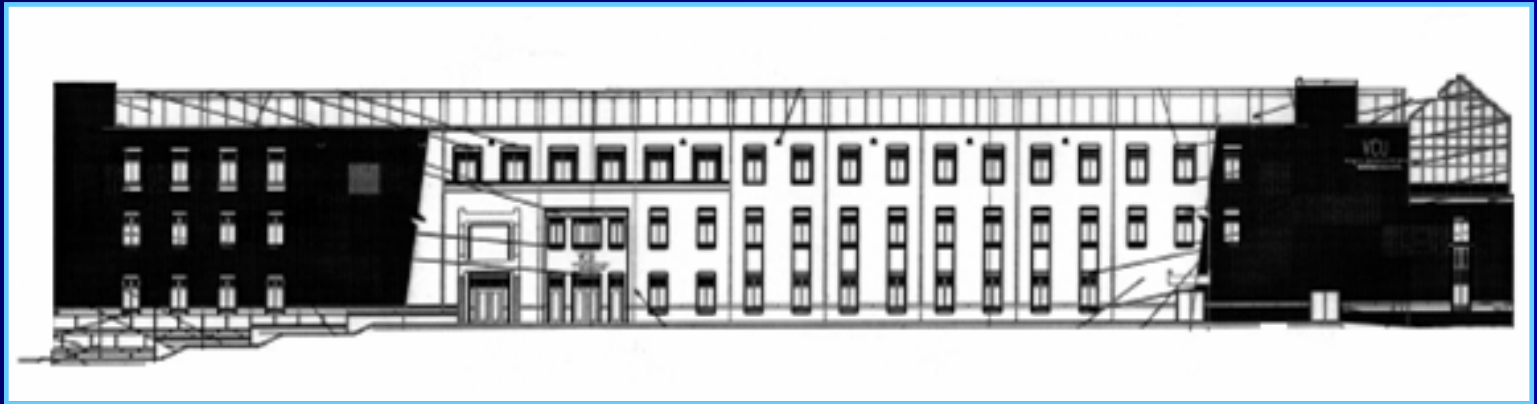
# Auditorium- Schematic Design Sketches



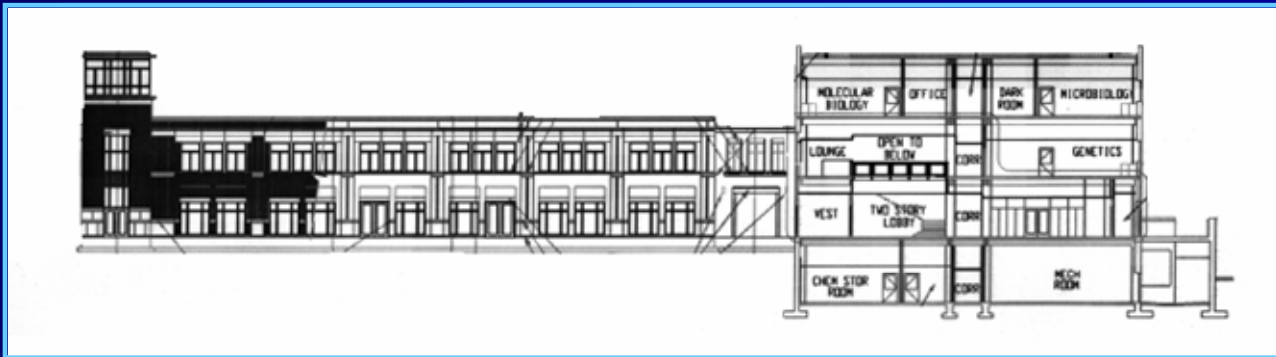
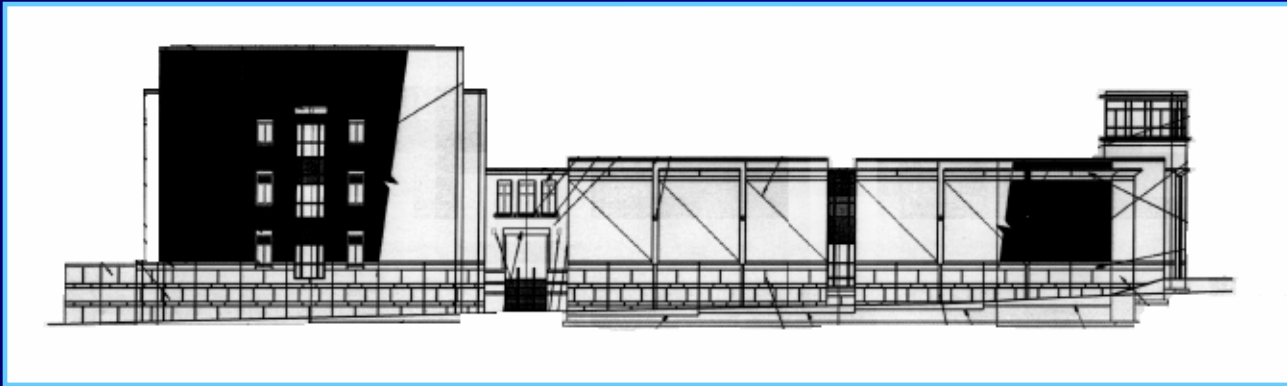
# Exterior



# Exterior- Elevations



# Exterior- Elevations



# Exterior- Description

- Materials:
  - Walls: Brick & Pre-cast Concrete
  - Ground: Grass & Concrete

# Exterior- Design Considerations

- Focal Points:
  - Building Entrances
  - Walkways
- Overhead Walkways
- Narrow space between 2 story and 3 story buildings



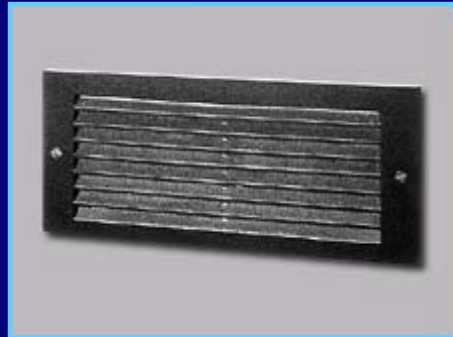
# Exterior- Schematic Design Goals

- Safe & secure atmosphere
- Good visibility
- Facial Modeling

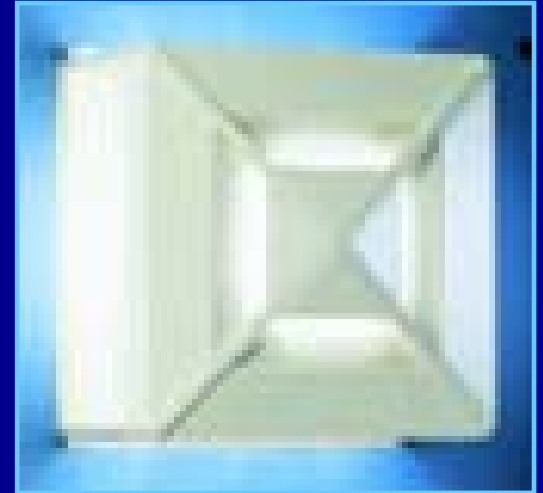
# Exterior- Proposed Fixtures



Floodlight to Wash  
Exterior Wall of  
Classroom Building

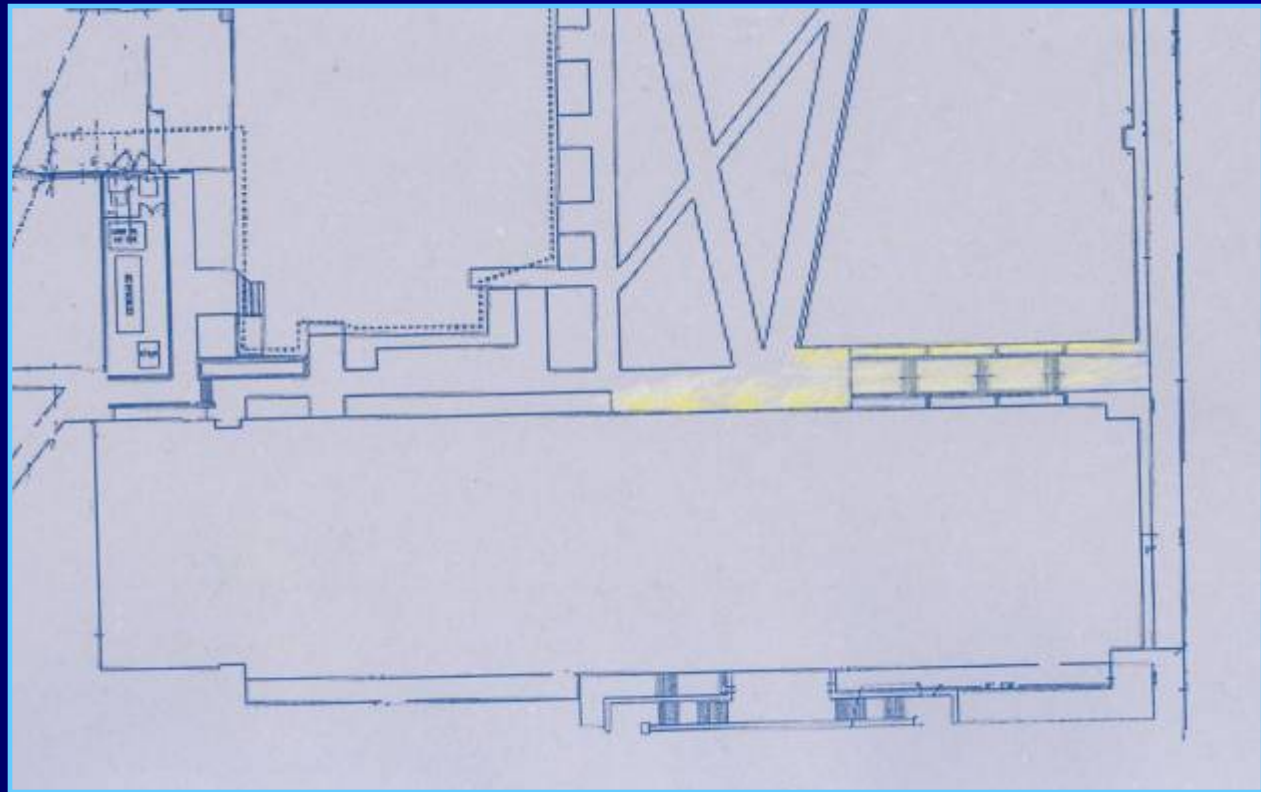


Step light

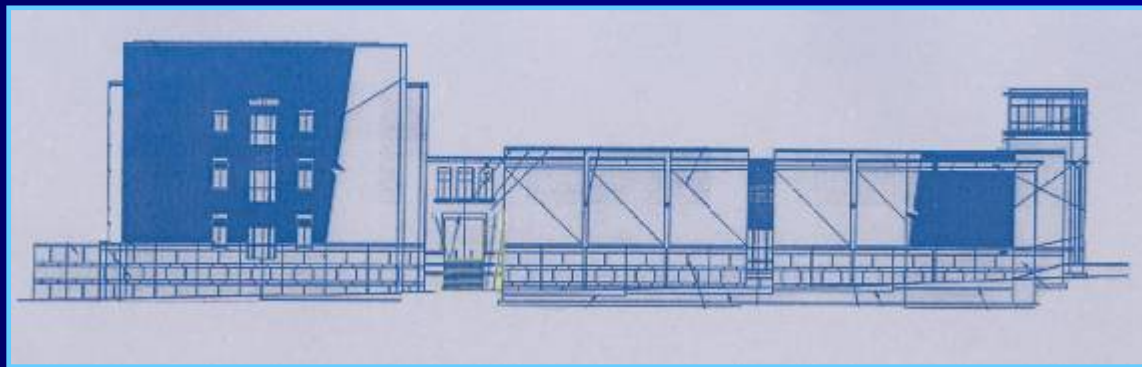


Wall Sconce at  
Building Entrances

# Exterior- Schematic Design Sketches



# Exterior- Schematic Design Sketches



Questions?